

Stiffel[®]

HOSPITALITY

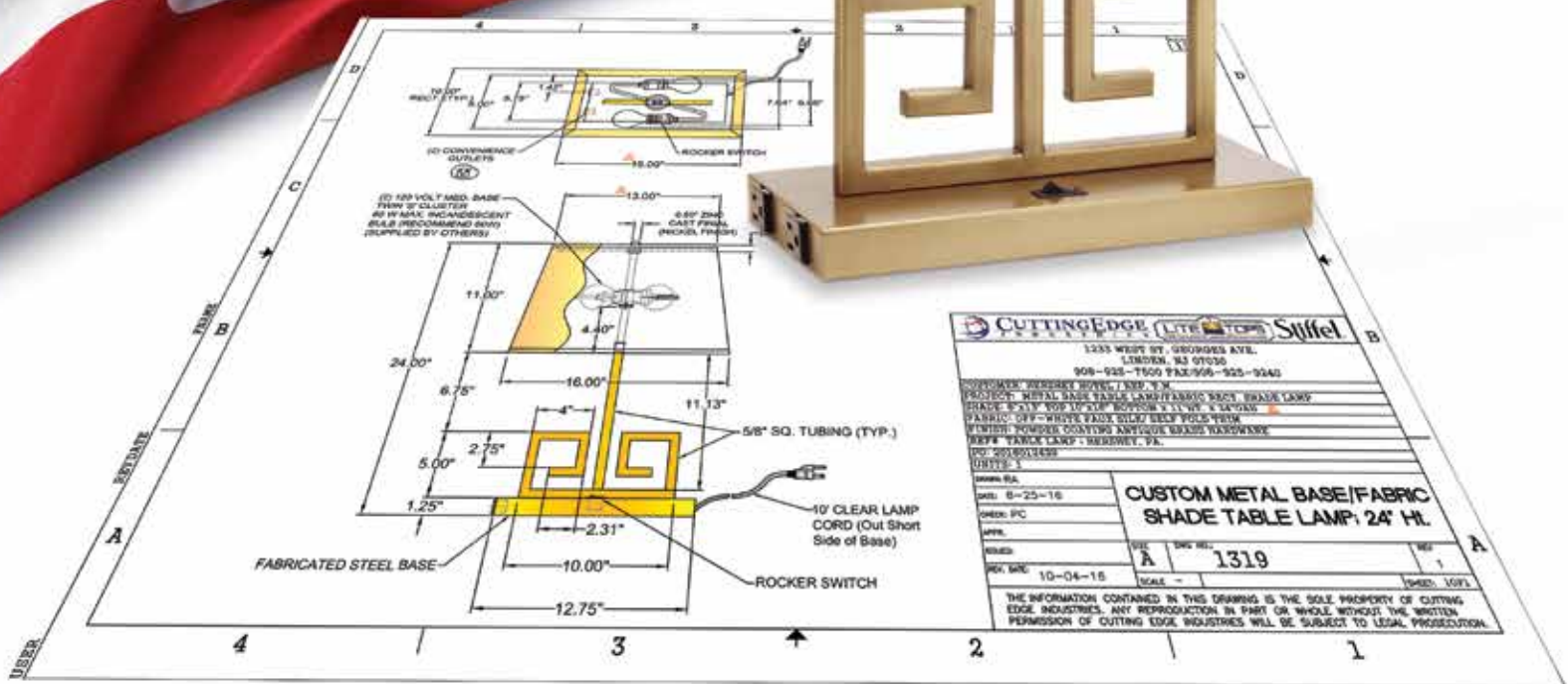
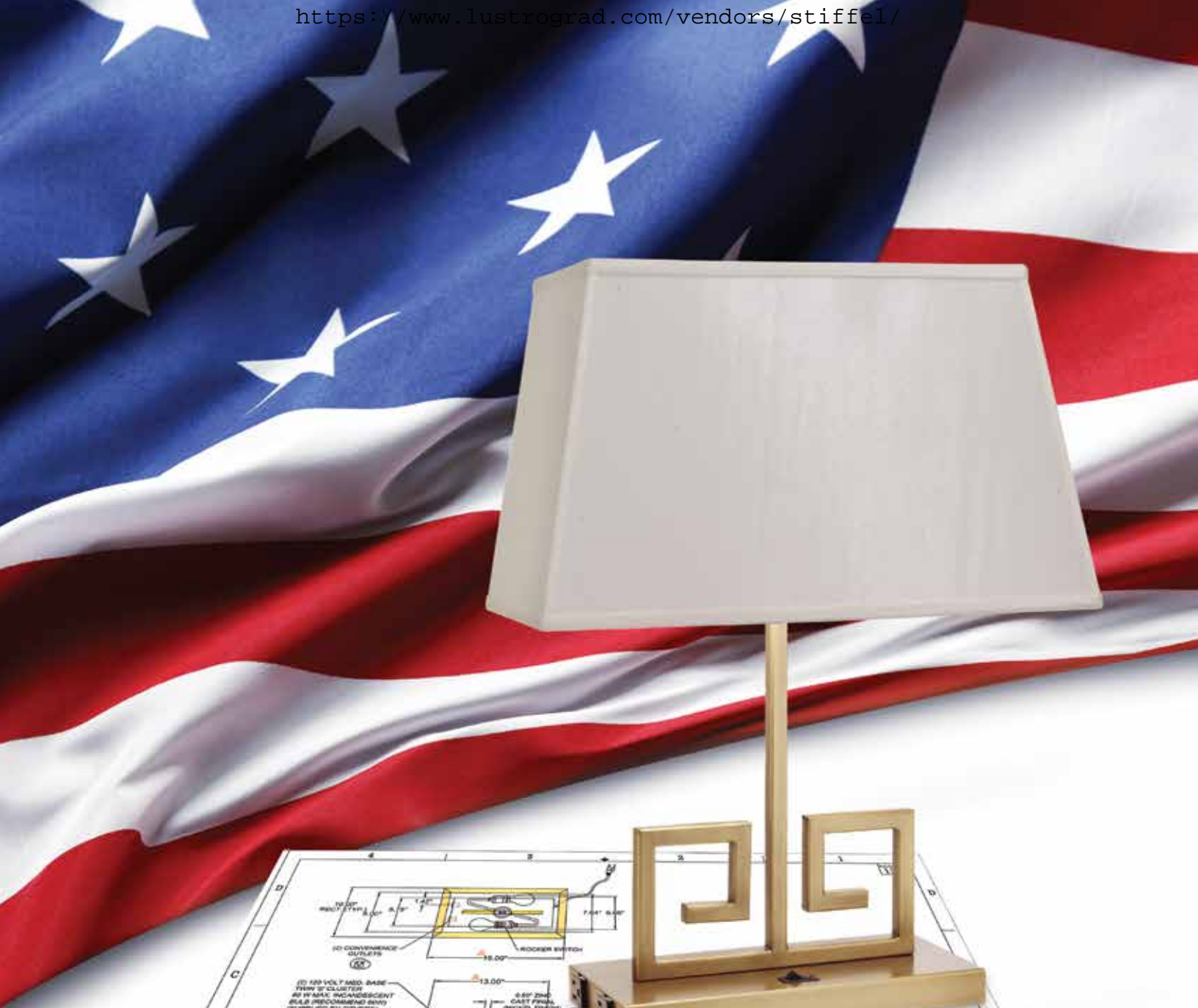


2017



MADE IN AMERICA

www.stiffel.com



CUTTING EDGE (LITE TOP) Stiffel	
1235 WEST ST. GEORGETOWN, DE. 19620 908-925-7600 FAX: 908-925-9240	
1235 WEST ST. GEORGETOWN, DE. 19620 PROJECT: METAL BASE TABLE LAMP/FABRIC SHADE LAMP DRAWN: PCY 10/16/15 REVISED: 11/16/15 1 LAYOUT FABRIC: OFF-WHITE FAUX SILK 24\"/>	
FINISH: POWDER COATING ANTIQUE BRASS HARDWARE REF: TABLE LAMP - BERKELEY, CA. DWG. NO: 10-04-15 UNITS: 1	
FORM: RA DATE: 8-25-16 OWNER: PC APPR:	SHEET NO. 1 SHEETS: 1 OF 1 CUSTOM METAL BASE/FABRIC SHADE TABLE LAMP, 24\"/>
DWG. NO. 10-04-15 SCALE: -	DWG. NO. 1319 REF. 1
THE INFORMATION CONTAINED IN THIS DRAWING IS THE SOLE PROPERTY OF CUTTING EDGE INDUSTRIES. ANY REPRODUCTION IN PART OR WHOLE WITHOUT THE WRITTEN PERMISSION OF CUTTING EDGE INDUSTRIES WILL BE SUBJECT TO LEGAL PROSECUTION.	



STIFFEL HOSPITALITY

Stiffel has been an industry leader in manufacturing lighting products for over 80 years. One of the finest American made lighting brands, all products are made in the USA by our staff of talented craftspeople, using only the finest materials. We specialize in servicing the hospitality and commercial markets with both standard catalog items, as well as custom made products.



We work collaboratively with hotel operators, designers, architects and contractors to help successfully complete projects of all sizes, whether it be one or even one thousand pieces. Our experience and flexibility make us the ideal factory to work with, when dealing with tight lead times and budget constraints.

Each and every product shown in this catalog can be customized by finish, fabric or even size. All custom client designs are welcome, for us to quote.





CONTENTS

About Us	2
Manufacturng Process	6-7
Portable Lamps	8-37
Bolt Down Lamps	18
Wall Fixtures	19-56
Name Plate Wall Fixtures	51
Custom Lighting	57
Index	58
Finish Codes	58
Stiffel Company History	59

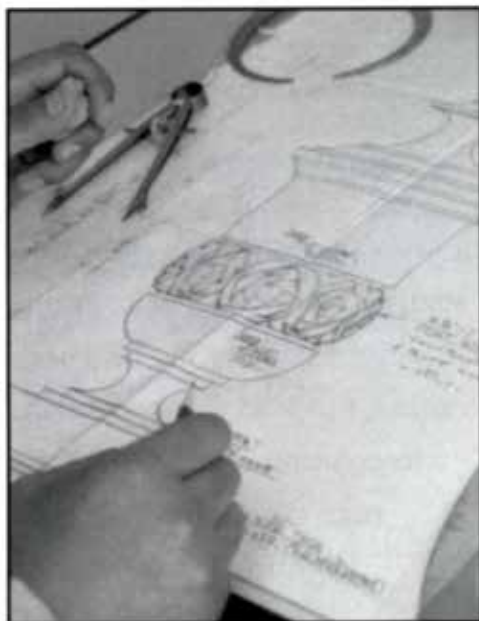
Stiffel®

The Stiffel Difference

Many factors combine to make the Stiffel Difference: integrity of design, hand craftsmanship and use of the finest materials. Made in the USA, every Stiffel lamp is an original, created by talented designers and skilled artisans. A Stiffel lamp has a rare quality that transcends the strictly utilitarian and goes beyond the merely decorative.

The purchase of a Stiffel lamp is one of the finest investments you could make for your home. Of course, there is the obvious beauty and form of the piece, but that is just the beginning. A Stiffel lamp is a work of art.

To truly appreciate the beauty of a Stiffel lamp, one must take in each detail and consider the hours of expert craftsmanship that created it: the design, the carving, the finish. A close study reveals the distinguishing value of a Stiffel. It takes dozens of precise steps to achieve this beauty that, in the end, satisfies the tastes and aesthetics of even the most discriminating.



DESIGN

A Stiffel lamp begins with a vision. Each Stiffel lamp evolves from an original design created by our own artists. They take their inspirations from artifacts, architecture or works of art. New designs are scrutinized to insure that they will measure up to Stiffel's standards. Many of our designs are so unique, they are protected by copyrights.



MOLD MAKING

The artist's concepts are brought to life by skilled artisans in the mold making process. First, a three-dimensional plaster model is carefully created to serve as a prototype. Every detail is captured and every nuance is faithfully re-created in the model. From this, a relief-metal mold is made—a finely-crafted reproduction which is machined by hand to insure a flawless fit and appearance. After a cast-iron mold has been produced and thoroughly inspected, it can be released for initial production.



CASTING

Hand casting begins where a specially formulated molten metal alloy is poured by hand into the mold. Compare the weight of a Stiffel casting to any other lamp. Many of our competitors add weights to the bottom of their lamps to match the substance that is cast right into a Stiffel. Extraordinary effort is taken to assure that each casting is as close to perfect as possible. Craftsmen—many with more than 20 years of experience—take special pride in their work. When the castings are removed from the mold, the finish is still dull with a rough and grainy texture. Each piece must then be polished repeatedly to achieve the unique Stiffel finish.



POLISHING

Next, the casting seams are smoothed and design details are enhanced through a process called skiving. Many lamp makers consider this step unnecessary, but it is mandatory for a lamp that bears the Stiffel name. Once machined, each part is hand-polished to a radiant shine through a minimum of three polishing operations by skilled artisans.



PLATING

Castings are then taken through a special cleaning and plating process that is uniquely Stiffel. Further cleaning and etching prepares the parts for staining—a process that has been developed and refined over half a century. Some special finishes may require as many as twenty separate immersions in special baths and rinses. Traditional designs undergo a treatment where the brass is burnished to an antique patina. First the brass is thoroughly oxidized in special solutions, then hand-buffed to remove some of the antiquing, revealing the warm, natural beauty of the brass.



FINAL ASSEMBLY

Next, castings are assembled and a specially formulated lacquer is applied to preserve and protect the finish. Designs that require it are embellished and enhanced by hand antiquing—another detail that makes that “Stiffel Difference.”



FINISHING

The castings are then hand-finished in an operation known as “highlighting.” Using a soft-cloth buffing wheel and a special buffing compound—jeweler’s rouge, in some cases—a highly skilled craftsman carefully buffs the casting surface to create a rich, warm finish that is as durable as it is distinctive. Stiffel creates a finish that is untouched in the industry.



WIRING & TESTING

Each lamp is wired using only the finest of electrical components. A felt bottom is applied to prevent scratching. For a Stiffel lamp to leave the factory, it must pass the industry’s most rigorous standard for quality.



A.



A. TL-6667-4TUB-BKG
Table Lamp
Finish: Matte Black & Polished Gold
Height: 30"
Shade Fabric :White Aberdeen/Black Trim
Size: 12 X 13 x 12
Switch: ADA Rocker
Wattage: 100 W Max
Convenience Outlet in Base (optional)

B.



B. FL-A1005-4TUB-BKG
Floor Lamp
Finish: Matte Black & Polished Gold
Height: 63"
Shade Fabric: White Aberdeen/Black Trim
Size: 14"x 15" x 15"
Switch: 3 Way
Wattage: 150 W Max

A.



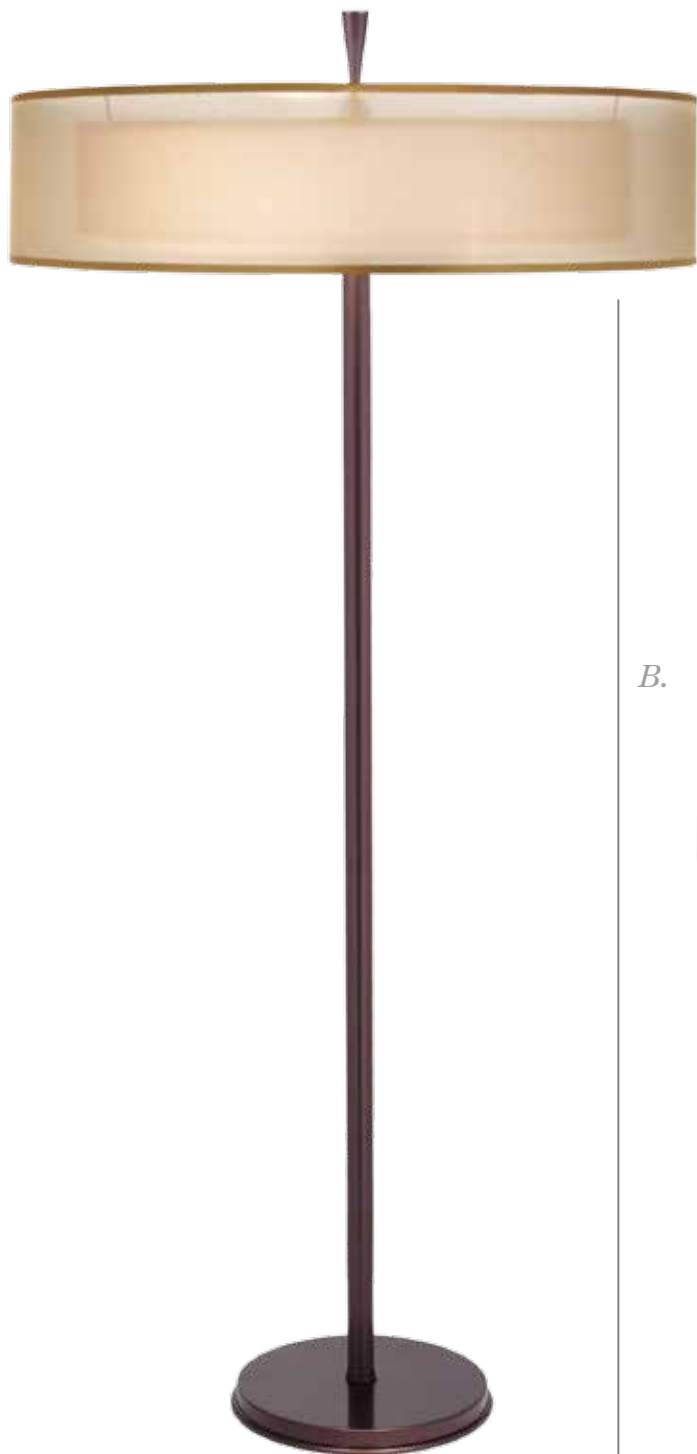
B.



A. FL-A065-N3760-GM
Floor Lamp
Finish: Gun Metal
Height: 63"
Shade Fabric: Global White
Size: 17" x 18" x 12"
Switch: 3 Way
Wattage: 150 W Max

B. TL-N3758-N3759-GM
Table Lamp
Finish: Gun Metal
Height: 30"
Base: 9"
Shade Fabric: Global White
Size: 14" X 15" X 10"
Switch: ADA Rocker
Socket: Medium Based
Convenience Outlet in Base (optional)

A.



B.

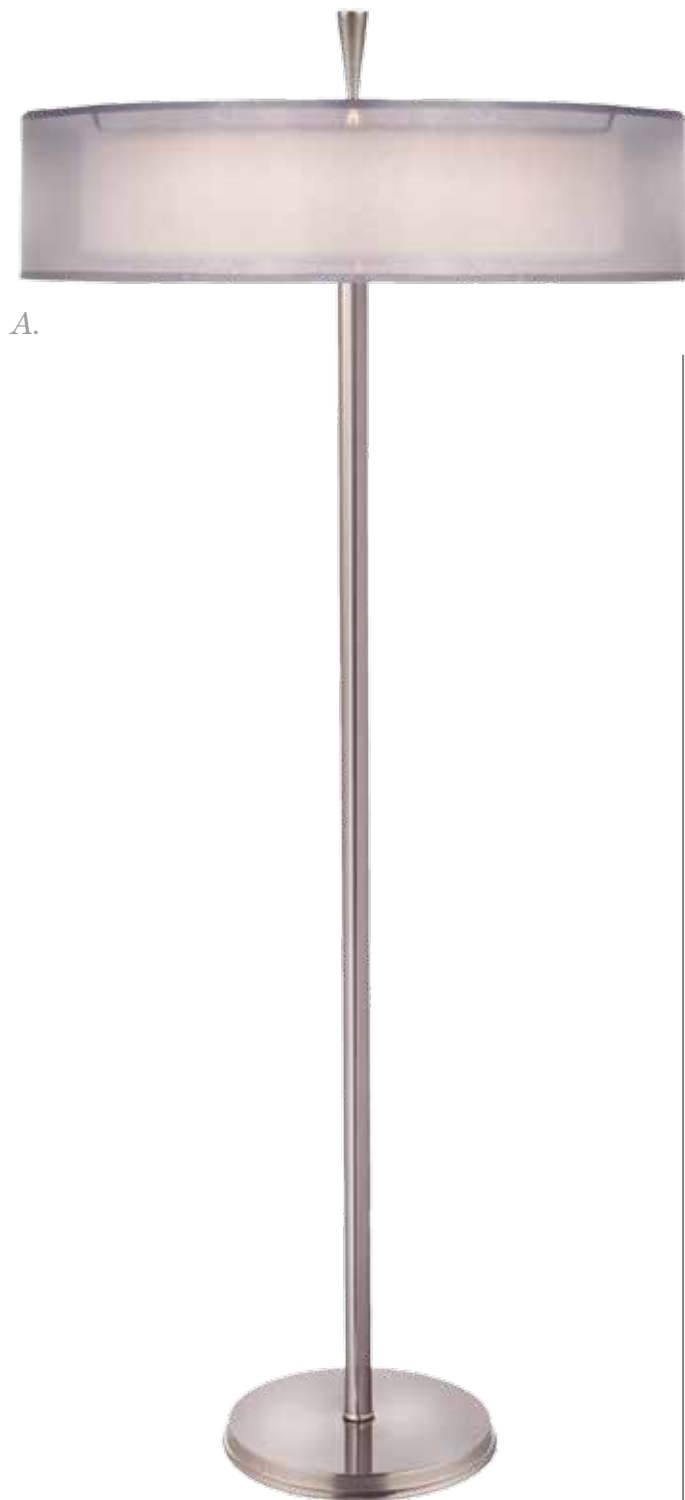


A. FL-A065-ORB

Floor Lamp
Finish: Oil Rubbed Bronze
Height: 63"
Shade Fabric: Gold Organza/White Linen
Size: 22" x 22" x 5 1/2" outer/18" x 18" x 4" inner
Socket: (2) Medium Base
Wattage: 75 W Max Each
Acrylic Lens Included

B. TL-K6184-ORB

Table Lamp
Finish: Oil Rubbed Bronze
Height: 31"
Base: 10 1/2"
Shade Fabric: Gold Organza/White Linen
Size: 22" X 22" X 5 1/2" outer/18" x 18" x 4" inner
Switch: ADA Rocker
Socket: (2) Medium Based
Acrylic Lens included
Convenience Outlet in Base (optional)



- A. FL-A065-SN**
Floor Lamp
Finish: Satin Nickel
Height: 63"
Shade Fabric: Silver Organza/White Linen
Size: 22" x 22" x 5 1/2" outer/18" x 18" x 4" inner
Socket: (2) Medium Base
Wattage: 75 W Max Each
Acrylic Lens Included

- B. TL-K6184-SN**
Table Lamp
Finish: Satin Nickel
Height: 31"
Base: 10 1/2"
Shade Fabric: Silver Organza/White Linen
Size: 22" X 22" X 5 1/2" outer/18" x 18" x 4" inner
Switch: ADA Rocker
Socket: (2) Medium Based
Acrylic Lens included
Convenience Outlet in Base (optional)

A.



A. FL-N8205-N8204-RST
Floor Lamp
Finish: Rust
Height: 59"
Shade Fabric: Cream Aberdeen
Size: 11" x 17" x 12"
Switch: 3 Way
Wattage: 150 W Max

B.



B. TL-6637X-N8204-RST
Table Lamp
Finish: Matte Black & Rust
Height: 28"
Base: 7"
Shade Fabric: White Linen
Size: 11" X 16" X 10.5"
Switch: ADA Rocker
Socket: Medium Based
Convenience Outlet in Base (optional)

A.



B.



- A. **TL-6637-A652-WH**
Table Lamp
Finish: White/Black Matte
Height: 28"
Base: 7"
Shade Fabric: Raffia
Size: 13" X 14" X 10"
Switch: ADA Rocker
Wattage: 100W Max
Convenience Outlet on Base (optional)

- B. **TL-6637X-A846-BGBZ**
Table Lamp
Finish: Belgian Bronze
Height: 30"
Base: 7"
Shade Fabric: Cream Aberdeen
Size: 11" X 16" X 10.5"
Switch: ADA Rocker
Socket: Medium Based
Convenience Outlet in Base (optional)

A.



B.



A. FL-A065-A090-SN
Floor Lamp
Finish: Satin Nickel
Height: 65"
Shade Fabric: Cream Aberdeen
Size: 15" x 17" x 13"
Switch: 3 Way
Wattage: 150 W Max

B. TL-5855-A090-SN
Table Lamp
Finish: Satin Nickel
Height: 29"
Base: 7 1/2"
Shade Fabric: Cream Aberdeen
Size: 12" X 15" X 10"
Switch: ADA Rocker
Socket: Medium Based
Convenience Outlet in Base (optional)



A. TL-6667-N7685-OB

Table Lamp
Finish: Oxidized Bronze
Height: 30"
Base: 7 1/2"
Shade Fabric: Perforated Metal/White Linen
Size: 16" x 16" x 10" outer/13" x 13" x 9.5" inner
Switch: ADA Rocker
Socket: Medium Based
Convenience Outlet in Base (optional)

B. FL-A065-N7685-OB

Floor Lamp
Finish: Oxidized Bronze
Height: 63"
Shade Fabric: Perforated Metal/White Linen
Size: 20" x 20" x 11" outer/17" x 17" x 10 1/2" inner
Switch: 3 Way
Wattage: 150 W Max



A. FL-6654-A791-OB
Floor Lamp
Finish: Oxidized Bronze
Height: 67"
Base: 11 3/4"
Shade Fabric: Cream Aberdeen
Size: 16" x 17" x 11"
Switch: Step Switch
Socket: Medium Based
Acrylic Top Lens Included



B. TL-6678-A791-OB
Table/Desk Lamp
Finish: Oxidized Bronze
Height: 26"
Base: 6 1/4"
Shade Fabric: Cream Aberdeen
Size: 9" X 9" X 8"
Switch: ADA Rocker
Socket: Medium Based
Convenience Outlet in Base (optional)
Acrylic Top Lens Included



BDNY Show, New York, NY

A.



A. **TL-6533X-ORB**

- Common Area Lamp
- Finish: Oil Rubbed Bronze
- Height: 13"
- Base: 22" x 6"
- Shade Fabric: Cream Aberdeen
- Size: (48" X 10") x (48" x 10") x 8"
- Switch: ADA Rocker
- Socket: (4) Medium Based
- Convenience Outlets in Base (optional)
- Acrylic Top Diffuser Included



Hampton Inn & Suites
Green River, WY

A.



B.



BOLT DOWN LAMPS:

Bolt Down Lamps are ideal for environments where the lamp needs to be secured to a flat surface, such as a table or countertop. Each lamp can be ordered with components that meet the specifications of the surface they are being secured to. They are ideal for healthcare, hotel common areas and cruise ship settings and are fully customizable.

A. TL-N8161-42H-ORB

Common Area Lamp
Finish: Oil Rubbed Bronze
Height: 42"
Base: 7 3/4"
Shade Fabric: Beige Waxed Parchment
Size: 7 1/2" x 7 1/2" x 10"
Switch: ADA Rocker
Socket: (2) 60 Watt Max Medium Based
Bolt Down Kit Option Available

B. TL-N8161-30H-ORB

Common Area Lamp
Finish: Oil Rubbed Bronze
Height: 30"
Base: 7 3/4"
Shade Fabric: Beige Waxed Parchment
Size: 7 1/2" sq x 7 1/2 sq x 8"
Switch: ADA Rocker
Socket: (2) 60 Watt Max Medium Based
Bolt Down Kit Option Available

A.



B.



A. **TL-N8161-ORB**

Table Lamp
Finish: Oil Rubbed Bronze
Fabric: Natural Bombay
Height: 26" Base: 7 1/2"
Shade: 7 1/2" sq x 7 1/2" sq x 21"
Materials: Metal w/ Hardback Shade
Rocker Switch

B. **TL-6637-ORB**

Table Lamp
Finish: Oil Rubbed Bronze
Fabric: Natural Bombay
Height: 25" Base: 7"
Shade: 7" sq x 7" sq x 21"
Materials: Metal w/ Hardback Shade
Rocker Switch

A.



B.



A. TL-A2073-ORB

Table Lamp
Finish: Oil Rubbed Bronze
Fabric: Natural Bombay
Height: 26" Base: 8 1/2"
Shade: 8 1/2" x 8 1/2" x 21"
Materials: Metal w/ Hardback Shade
Rocker Switch

B. TL-K100-SN

Table Lamp
Finish: Satin Nickel
Fabric: Off White Butcher Linen
Height: 20" Base: 5"
Shade: 5" x 5" x 15"
Materials: Metal w/ Hardback Shade

A.



B.



A. **TL-K771-SN**

Table Lamp
Finish: Satin Nickel
Fabric: Off White Butcher Linen
Height: 26" Base: 7 1/2"
Shade: 7 1/2" x 7 1/2" x 21"
Materials: Metal w/ Hardback Shade
Rocker Switch

B. **TL-A752-SN**

Table Lamp
Finish: Satin Nickel
Fabric: Off White Butcher Linen
Height: 26" Base: 6"
Shade: 6" sq x 6" sq x 20"
Materials: Metal w/ Hardback Shade
Rocker Switch

A.



B.



A. TL-6667-A620-SN
Table Lamp
Finish: Satin Nickel
Height: 31"
Base: 7 1/2"
Shade Fabric: Cream Aberdeen
Size: 12" X 15" X 10"
Switch: ADA Rocker
Socket: Medium Based
Convenience Outlet in Base (optional)

B. TL-6678-A057-SN
Table Lamp
Finish: Satin Nickel
Height: 33"
Base: 6 1/4"
Shade Fabric: Cream Aberdeen
Size: 12" X 15" X 10"
Switch: ADA Rocker
Socket: Medium Based
Convenience Outlet in Base (optional)

A.



B.



A. TL-6673-6674-SN

Table Lamp
Finish: Satin Nickel
Height: 29"
Base: 7 1/2"
Shade Fabric: Global White
Size: 14" X 15" X 10"
Switch: ADA Rocker
Socket: Medium Based
Convenience Outlet in Base (optional)

B. TL-A991-A092-SN

Table Lamp
Finish: Satin Nickel
Height: 31"
Base: 6 1/2"
Shade Fabric: Global White
Size: 14" X 15" X 10"
Switch: ADA Rocker
Socket: Medium Based
Convenience Outlet & USB Port in Base (optional)



A. TL-6637X-N7833-SU
Table Lamp
Finish: Smoked Umber/Black Matte
Height: 29"
Base: 6 3/8"
Shade Fabric: Pearl Supreme Satin
Size: 14" X 15" X 10"
Switch: Double Pull Chain
Wattage: 100 W Max Each

B. TL-N8217-RST
Table Lamp
Finish: Rust
Height: 29"
Base: 8"
Shade Fabric: Cream Aberdeen
Size: 11" x 16" x 10.5"
Switch: 3 Way or ADA optional
Wattage: 150 W Max



A. TL-K6001-K2091A-SN
Table Lamp
Finish: Satin Nickel & Faux Black Marble
Height: 34"
Base: 6 3/8"
Shade Fabric: Black Suede
Size: 17" X 18" X 9"
Switch: 3 Way or ADA optional
Wattage: 150 W Max

B. TL-N6332-N6333-SN
Table Lamp
Finish: Satin Nickel & Faux Black Marble
Height: 33"
Base: 6 1/2"
Shade Fabric: Black Suede
Size: 17" x 18" x 9"
Switch: 3 Way or ADA optional
Wattage: 150 W Max

A.



B.



A. TL-K4053-A630-SN

Table Lamp
Finish: Satin Nickel/Matte Black
Height: 29"
Base: 4 1/2"
Shade Fabric: Cream Aberdeen
Size: 13" X 14" X 10"
Switch: ADA Rocker
Socket: Medium Based
Convenience Outlet & USB on Base (optional) :

B. TL-6678-K5038-SN

Table Lamp
Finish: Satin Nickel & Matte Black
Height: 30"
Base: 6 1/4"
Shade Fabric: Cream Aberdeen
Size: 13" X 14" X 10"
Switch: ADA Rocker
Socket: Medium Based
Convenience Outlet & USB in Base (optional)

A.



B.



A. **TL-6678-A2061-SN**

Table Lamp
Finish: Satin Nickel & Matte Black
Height: 30"
Base: 6 1/4"
Shade Fabric: Cream Aberdeen
Size: 13" X 14" X 10"
Switch: ADA Rocker
Socket: Medium Based
Convenience Outlet & USB in Base (optional)

B. **TL-6678-A578-APW**

Table Lamp
Finish: Aged Pewter & Matte Black
Height: 29"
Base: 6 1/4"
Shade Fabric: Cream Aberdeen
Size: 13" X 14" X 10"
Switch: ADA Rocker
Socket: Medium Based
Convenience Outlet & USB in Base (optional)



A.



B.

- A. TL-K100-K538-SN
Table Lamp
Finish: Satin Nickel
Height: 24 1/2"
Base: 5"
Shade Fabric: White Butcher Linen
Size: 13" X 14" X 9"
Switch: ADA Rocker
Socket: Medium Based
Convenience Outlet in Base (optional)

- B. TL-K100-6670-SN
Table Lamp
Finish: Satin Nickel
Height: 24"
Base: 5"
Shade Fabric: White Butcher Linen
Size: 13" X 14" X 9"
Switch: ADA Rocker
Socket: Medium Based
Convenience Outlet in Base (optional)



A.



B.



C.

A. TL-K100-6621C-OB

Table Lamp
Finish: Satin Nickel & Oxidized Brz
Height: 26 1/2"
Base: 5"
Shade Fabric: White Butcher Linen
Size: 13" X 14" X 9"
Switch: ADA Rocker
Socket: Medium Based
Convenience Outlet in Base (optional)

B. TL-K100-K537-OB

Table Lamp
Finish: Satin Nickel & Oxidized Brz
Height: 24"
Base: 5"
Shade Fabric: White Butcher Linen
Size: 13" X 14" X 9"
Switch: ADA Rocker
Socket: Medium Based
Convenience Outlet in Base (optional)

C. TL-K100-6677-OB

Table Lamp
Finish: Satin Nickel & Oxidized Brz
Height: 26 1/2"
Base: 5"
Shade Fabric: White Butcher Linen
Size: 13" X 14" X 9"
Switch: ADA Rocker
Socket: Medium Based
Convenience Outlet in Base (optional)

A.

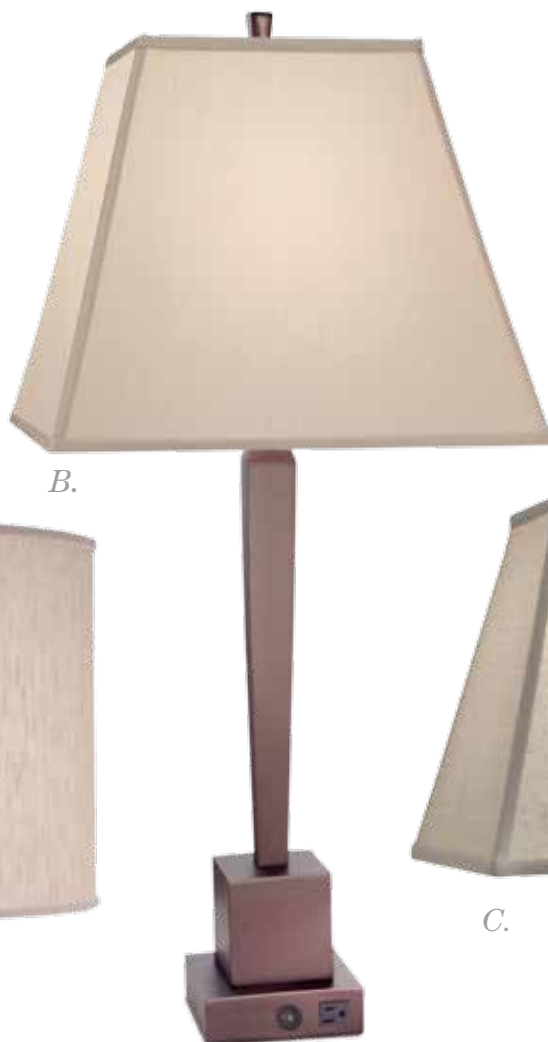


B.



A. TL-6400-6401-OB
Table Lamp
Finish: Oxidized Bronze
Height: 26" Base: 6 1/4"
Shade Fabric: Cream Aberdeen
Size: 12" X 15" X 10"
Switch: ADA Rocker
Socket: Medium Based
Convenience Outlet on Base (optional)

B. TL-6628-6630-OB
Table Lamp
Finish: Oxidized Bronze
Height: 32"
Base: 6 3/4"
Shade Fabric: Croissant Silksheen
Size: 16" X 16" X 11"
Switch: ADA Rocker
Socket: Medium Based
Convenience Outlet on Base (optional)



A. TL-6678-6526-ES

Table Lamp
Finish: Espresso
Height: 30"
Base: 6 1/2"
Shade Fabric: Adamo Flax
Size: 16" x 16" x 11"
Switch: ADA Rocker
Socket: Medium Based
Convenience Outlet in Base (optional)

B. TL-K55-A916-OB

Table Lamp
Finish: Oxidized Bronze
Height: 31
Base: 5"
Shade Fabric: Croissant Silksheen
Size: 12" X 15" X 10"
Switch: ADA Rocker
Socket: Medium Based
Convenience Outlet on Base (optional)

C. TL-K54-K543-OB

Table/Desk Lamp
Finish: Oxidized Bronze
Height: 26"
Base: 5 3/8"
Shade Fabric: Bombay Natural
Size: 6" sq X 11" sq X 9 1/2"
Switch: ADA Rocker
Socket: Medium Based
Convenience Outlet in Base (optional)

A.



B.



A. TL-K6139-A2248-AV

Table Lamp
Finish: Avacado/Satin Nickel
Height: 29"
Base: 4 1/2"
Shade Fabric: Cream Aberdeen
Size: 13" X 14" X 10"
Switch: ADA Rocker
Socket: Medium Based
Convenience Outlet & USB in Base (optional)

B. TL-6678-6780-YL

Finish: Satin Nickel & Gloss Yellow
Height: 28"
Base: 7"
Shade Fabric: Off White Linen
Size: 14" X 15" X 9"
Switch: ADA Rocker
Socket: Medium Based
Convenience Outlet in Base (optional)

A.



B.



A. TL-AC1584-6793-PHB

Table Lamp
Finish: Polished Honey Brass/Matte Black
Height: 31"
Base: 5 1/4"
Shade Fabric: Cream Aberdeen Softback
Size: 8" X 16" X 12"
Switch: ADA Rocker
Socket: Medium Based
Convenience Outlet & USB on Base (optional)

B. TL-A755-A715-PHB

Table Lamp
Finish: Polished Honey Brass
Height: 31"
Base: 6"
Shade Fabric: Cream Aberdeen
Softback
Size: 8" X 16" X 12"
Switch: ADA Rocker
Socket: Medium Based
Convenience Outlet & USB in Base (optional)

A.



Baron's Cove
Sag Harbor, NY

- A. TL-6678-N7608-LB
Table Lamp
Finish: Light Blue/Black Matte
Height: 30"
Base: 7"
Shade Fabric: White Opaque
Size: 14" X 15" X 10"
Switch: ADA Rocker
Wattage: 100 W Max
Convenience Outlet on Base (optional)

A.



B.



A. **TL-K57-A050-LB**

Table Lamp
Finish: Light Blue/Satin Nickel
Height: 28"
Base: 6"
Shade Fabric: Cream Aberdeen
Size: 13" X 14" X 10"
Switch: ADA Rocker
Socket: Medium Based
Convenience Outlet & USB on Base (optional)

B. **TL-6637-A977-LB**

Table Lamp
Finish: Light Blue/Satin Nickel
Height: 25"
Base: 7"
Shade Fabric: Cream Aberdeen
Size: 13" X 14" X 10"
Switch: ADA Rocker
Socket: Medium Based
Convenience Outlet in Base (optional)



A.



B.

A. TL-K6167-A963-007-S

Table Lamp
Finish: Silver Powder Coated (007)
Height: 29"
Base: 6"
Shade Fabric: White Linen
Size: 13" X 14" X 10"
Switch: 3 Way or ADA optional
Wattage: 150 W Max
Convenience Outlet in Base (optional)

B. TL-2117-C521-PHB

Table Lamp
Finish: Polished Honey Brass
Height: 33"
Base: 5"
Shade Fabric: Cream Aberdeen Hardback
Size: (8" x 8") x (14" x 14") x 12"
Switch: 3 Way or ADA optional
Wattage: 100 W Max
Convenience Outlet in Base (optional)



A.



B.

A. TL-6678-AUR-SN

Table Lamp
Finish: Satin Nickel
Height: 28"
Base: 6 1/4"
Shade Fabric: Metal/White Linen
Size: 12" x 12" x 3" outer/11" x 11" x 9" inner
Switch: ADA Rocker
Wattage: 100 W Max
Convenience Outlet & USB Port (Optional)

B. TL-CUS13X6B-AB

Desk Lamp
Finish: Antique Brass
Height: 24"
Base: 13" x 6"
Shade Fabric: Off White Linen
Size: (13" x 8") x (10" x 16") x 11"
Switch: ADA Rocker
Wattage: 100 W Max
Convenience Outlet in Base (Optional)

WALL FIXTURES





A.



B.



C.

A. WF-6791-XI-OB

ADA Sconce
Finish: Oil Rubbed Bronze
Shade Material: White Butcher Linen
Length: 17" Width: 8" Depth: 4" Back-plate: 5" square
Shade: (8" x 4") x (8" x 4") x 8"
1 - 40 Watt Max Candelabra

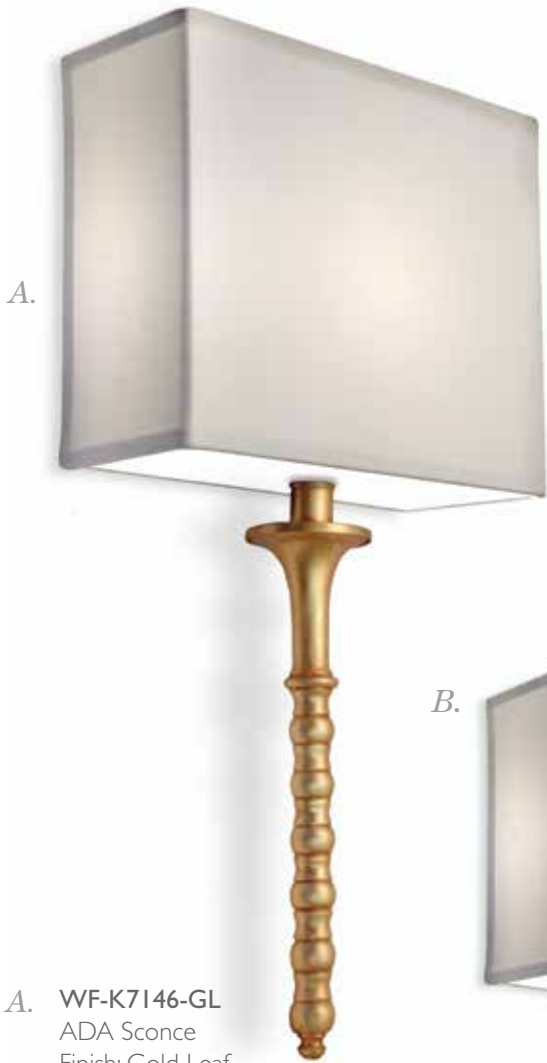
B. WF-6785-X2-OB

ADA Sconce
Finish: Oil Rubbed Bronze
Material: Off White Butcher Linen
Length: 16" Width: 11" Depth: 4" Back-plate: 8 1/4" L x 5 1/8" W
Shade: (10" x 4") x (11" x 4") x 8"
2 - GU24 CFL Sockets

C. WF-6790-115-01-244X-SN

ADA Sconce
Finish: Satin Nickel
Shade Material: White Butcher Linen
Length: 16" Width: 8" Depth: 4" Back-plate: 5"
Shade: (8" x 4") x (8" x 4") x 7"
1 - 40 Watt Max Candelabra





A. WF-K7146-GL
 ADA Sconce
 Finish: Gold Leaf
 Shade Material: White Butcher Linen
 Length: 22" Width: 11" Depth: 4"
 Backplate: 8 1/4" x 7"
 Shade: (11" x 4") x (11" x 4") x 8 1/2"
 1 - Candelabra Based or GU-24
 Socket

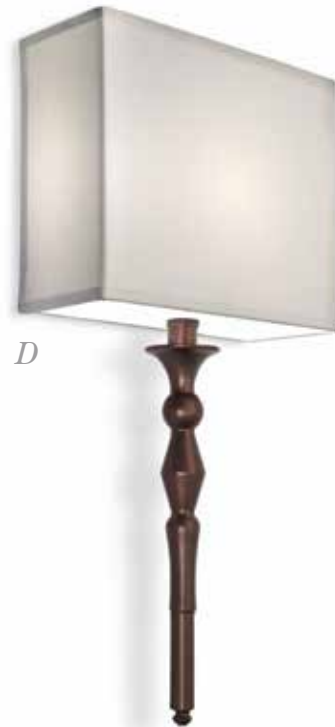


C.



B.

B. WF-5019X-GL
 ADA Sconce
 Finish: Gold Leaf
 Shade Material: White Butcher Linen
 Length: 21" Width: 11" Depth: 4"
 Backplate: 8 1/4" x 7"
 Shade: (11" x 4") x (11" x 4") x 8 1/2"
 1 - Candelabra Based or GU-24
 Socket



D.

C. WF-K323-GL
 ADA Sconce
 Finish: Gold Leaf
 Shade Material: White Butcher Linen
 Length: 21" Width: 11" Depth: 4"
 Backplate: 8 1/4" x 7"
 Shade: (11" x 4") x (11" x 4") x 8 1/2"
 1 - Candelabra Based or GU-24 Socket

D. WF-A891-OB
 ADA Sconce
 Finish: Oxidized Bronze
 Shade Material: White Butcher Linen
 Length: 22 1/2" Width: 11" Depth: 4"
 Backplate: 8 1/4" x 7"
 Shade: (11" x 4") x (11" x 4") x 8 1/2"
 1 - Candelabra Based or GU-24 Socket-
 optional)



A.



B.



C.



A. WF-6791-6799-OB

ADA Sconce
Finish: Oxidized Bronze
Shade Material: White Butcher Linen
Length: 24 1/2" Width: 11" Depth: 4"
Backplate: 5" sq
Shade: (11" x 4") x (11" x 4") x 8 1/2"
1 - Candelabra Based or GU-24
Socket

B. WF-6592-X2-BB

ADA Sconce
Finish: Burnished Brass
Shade Material: Natural Butcher Linen/
Croissant Trim
Length: 16" Width: 11" Depth: 4"
Backplate: 8 1/4" x 5"
Shade: (10" x 4") x (11" x 4") x 8"
2 - Candelabra Based or GU-24 Socket

C. WF-6792-1355-SN

ADA Sconce
Finish: Satin Nickel
Shade Material: White Butcher Linen
Length: 17 1/2" Width: 11" Depth: 4"
Backplate: 5"
Shade: (11" x 4") x (11" x 4") x 8 1/2"
2 - Candelabra Based or GU-24 Sockets



A. WF-6372-X2-SN
 ADA 2 Light Sconce
 Finish: Satin Nickel
 Shade Material: OffWhite Camelot
 Length: 19" Width: 10 1/2"
 Depth: 4"
 Backplate: 5 1/2" square
 Shade: 2 1/2" x 3 1/2" x 5" 4" Long Candle Sleeves
 2 - 40 Watt Max Candelabra Based Socket
 1 - Medium Based or GU-24 Socket



B.



C.



D.



E.

B. WF-6432-5045-SN
 ADA Sconce
 Finish: Satin Nickel
 Shade Material: White
 Butcher Linen
 Length: 20"
 Width: 8 1/2" Depth: 4"
 Backplate: 6"
 Shade: (4 1/2" x 1 3/4") x
 (8 1/2" x 4") x 8 1/2"
 1 - Candelabra Based or
 GU-24 Socket

C. WF-6792-A964-2-SN
 ADA Sconce
 Finish: Satin Nickel
 Shade Material: White
 Butcher Linen
 Length: 17" Width: 8 1/2"
 Depth: 4"
 Backplate: 5"
 Shade: (4 1/2" x 1 3/4")
 x (8 1/2" x 4") x 8 1/2"
 1 - Candelabra Based or
 GU-24 Socket

D. WF-N5628-5046-SN
 ADA Sconce
 Finish: Satin Nickel
 Shade Material: White
 Butcher Linen
 Length: 20 1/2" Width: 5"
 Depth: 4"
 Backplate: 6 1/2" x 5"
 Shade: 4" x 4" x 7"
 1 - Candelabra Based or
 GU-24 Socket

E. WF-N5628-K692-SN
 Sconce
 Finish: Satin Nickel
 Shade Material: White
 Butcher Linen
 Length: 22" Width: 5" Depth:
 5 1/2"
 Backplate: 6 1/2" x 5"
 Shade: 3 1/2" x 5 1/2" x 7"
 1 - Candelabra Based or
 GU-24 Socket



A.
WF-N5628-SB
Sconce
Finish: Satin Brass
Shade Material: Off White Butcher Linen w/ Contrasting Stripes
Length: 16" Width: 5" Depth: 5 1/2"
Backplate: 6 1/2" x 5"
Shade: (4" x 4") x (4" x 4") x 8" H
1 - 60 Watt Max Medium Based

B.



B. **WF-N4708-A1006-OB**
ADA Sconce
Finish: Oxidized Bronze
Shade Material: White Butcher Linen
Length: 19" Width: 11" Depth: 4"
Backplate: 7 1/2" x 6"
Shade: (11" x 4") x (11" x 4") x 8 1/2" H
1 - Candelabra Based or GU-24 Socket

C.



D.



C. **WF-6791-115-05-578-ORB**
Square Pendant Fixture
Finish: Oil Rubbed Bronze
Fabric: Off White Butcher Linen with Chocolate Trim
Length: 12 1/2" Width: 7"
Depth: 10"
Canopy: 5" square
Shade: 7" sq x 7" sq x 6"
1 - 60 Watt Max Medium Based Bulb

D. **WF-CUS9-115-01-ORB**
ADA Sconce
Finish: Oil Rubbed Bronze
Shade Material: White Butcher Linen
Length: 26" Width: 5 1/2" Depth: 4"
Backplate: 26" x 5 1/2"
Shade: (3 1/2" x 3 1/2") x (3 1/2" x 3 1/2") x 16"
1 - Candelabra Based or GU-24 Socket

A.



A. WF-6773-6774-PN
 Sconce
 Finish: Polished Nickel
 Shade Material: Off
 White Butcher Linen
 Length: 14" Width: 6 1/2" Depth: 8 1/2"
 Backplate: 6" x 4 1/2"
 Shade: 4 1/2" x 6 1/4" x 5 1/2" H
 1 - 60 Watt Max Medium Based

C.



B.



B. WF-6773-6798-SN
 Sconce
 Finish: Satin Nickel
 Shade Material: White Butcher Linen
 Length: 16" Width: 7" Depth: 9 1/2"
 Backplate: 6" x 4 1/2"
 Shade: 7" x 7" x 7"
 1 - Medium Based or GU-24 Socket

C. WF-5802-6774-SN
 Sconce
 Finish: Satin Nickel
 Shade Material: White Butcher Linen
 Length: 17" Width: 8" Depth: 9"
 Backplate: 6 1/4" square
 Shade: (8" x 8") x (8" x 8") x 8"
 1 - Medium Based Socket or GU-24
 Socket

D.



D. WF-6533X-6774X2-SN
 Double Sconce
 Finish: Satin Nickel
 Shade Material: White Butcher Linen
 Length: 17" Width: 22" Depth: 9"
 Backplate: 22" x 6"
 Shade: (8" x 8") x (8" x 8") x 8" (2 Shades)
 2 - Medium Based or GU-24 Sockets
 (convenience outlet or ADA switch optional)



A. SWF-5802-SN

Swing Arm Sconce
Finish: Satin Nickel
Shade Material: White Butcher Linen
Length: 13" Width: 8" Depth: 23"
Backplate: 6 1/4" square
Shade: (8" x 8") x (8" x 8") x 8"
1 - Medium Based or GU-24 Socket
(convenience outlet or ADA switch optional)

B. SWF-6533X-X2-SN

Double Swing Arm Sconce
Finish: Satin Nickel
Shade Material: White Butcher Linen
Length: 13" Width: 22" Depth: 23"
Backplate: 22" x 6"
Shade: (8" x 8") x (8" x 8") x 8" (2 shades)
2 - Medium Based or GU-24 Sockets
(convenience outlet or ADA switch optional)

A



B



C.



A. WF-5802-KI38-PHB
ADA Sconce
Finish: Polished Honey
Brass/Matte Black
Shade Material: White Linen
Length: 16 1/2" Width: 8 1/2"
Depth: 4"
Backplate: 6 1/4" square Shade:
(4 1/2" x 1 3/4") x (8 1/2" x 4")
x 8 1/2"
1 - 40W Candelabra Based
or GU24 Socket

B. WF-6413-6701-PW
Sconce
Finish: Pewter
Shade Material: Global White
Length: 21" Width: 10" Depth: 10"
Backplate: 6 1/4"
Shade: 7" x 10" x 8"
1 - Medium Based or GU-24 Socket

C. WF-A013-K7092-OB
Sconce
Finish: Oxidized Bronze
Shade Material: White Butcher Linen
Length: 16" Width: 6" Depth: 7"
Backplate: 5 1/2"
Shade: (4" x 4") x (6" x 6") x 7"
1 - Candelabra Based or GU-24 Socket



A. WF-AC2241-K5024-BB
 Sconce
 Finish: Burnished Brass
 Shade Material: None
 Length: 12" Width: 4 1/2"
 Depth: 9 1/2"
 Backplate: 7 1/2" x 4 1/2"
 Shade: None
 1 - Candelabra Based



C.



B.

B. WF-N5628-A005-BGBZ
 Sconce
 Finish: Belgian Bronze
 Shade Material: Bombay Natural
 Length: 12 1/2" Width: 5" Depth: 9"
 Backplate: 6 1/2" x 5"
 Shade: 3 1/2" x 5 1/2" x 5" H
 1 - 40 Watt Max Candelabra



D.

C. WF-A979-K3307X2-OB
 Double Sconce
 Finish: Oxidized Bronze
 Shade Material: Beige Waxed Parchment
 Length: 13" Width: 16 1/2" Depth: 10"
 Backplate: 7"
 Shade: 4" x 6" x 5 1/2"
 2 - Candelabra Based or
 GU-24 Sockets

D. WF-AC8561-K1504-BB
 Sconce
 Finish: Burnished Brass
 Shade Material: None
 Length: 12" Width: 4 1/2" Depth: 6 1/4"
 Backplate: 11 3/4" x 4 1/2"
 Shade: None
 1 - Candelabra Based



A. WF-C577-CI06-DW
Sconce
Finish: Distressed White
Length: 12 1/2" Width: 4 1/4"
Depth: 9"
Backplate: 10 3/4" x 4 1/4"
1 - 40 Watt Max Candelabra

B. WF-CI93-KI510-MS
Sconce
Finish: Milano Silver
Length: 12" Width: 4 1/4" Depth: 9"
Backplate: 10" x 4 1/4"
1 - 40 Watt Max Candelabra

C. WF-C577-CI06X2-DW
2 Light Sconce
Finish: Distressed White
Length: 12 1/2" Width: 13" Depth: 8"
Backplate: 10 3/4" x 4 1/4"
2 - 40 Watt Max Candelabra



A.



B.

A. WF-2444-2816X2-BGBZ
2 Light Sconce
Finish: Belgian Bronze
Shade Material: Black Opaque/Gold Foil
Length: 18 1/2" Width: 10" Depth: 5 1/2"
Backplate: 18 1/2" x 4"
Shade: 3" x 5" x 4"
2 - 40 Watt Max Candelabra

B. WF-K7164-K5053-BGBZ
Sconce
Finish: Belgian Bronze
Shade Material: Black Opaque/Gold Foil
Length: 12" Width: 5" Depth: 5 1/2"
Backplate: 7" x 3 3/4"
Shade: 3" x 5" x 4" H
1 - 40 Watt Max Candelabra



A.



B.



C.

A. SWF-6530-N2545-GBLK

Swing Arm Sconce
Finish: Gold With Black Antique
Shade Material: Off White Silk
Shantung Softback
Length: 26" Width: 10" Depth: 26"
Backplate: 6" x 4 1/2"
Shade: 5" x 10" x 8" H
1 - 60 Watt Max Medium Based 10"
Wall Stem & 8' Long Plug included

B. SWF-6531-AC8544-PHB

Swing Arm Sconce
Finish: Polished Honey Brass/Matte Black
Shade Material: Cream Aberdeen
Length: 16" Width: 10"
Depth: 24" extended
Backplate: 9 1/2" x 6"
Shade: 6" x 10" x 8"
1 - 60 Watt Medium Based

C. SWF-6531-OB

Swing Arm Sconce
Finish: Oxidized Bronze
Shade Material: Cream Aberdeen
Length: 18" Width: 10" Depth: 18"
Backplate: 9 1/4" x 6"
Shade: 6" x 10" x 8"
1 - Medium Based Socket or
GU-24 Socket

NAME PLATE WALL FIXTURES

Optional Engraved Plates Available

A.



B.



A. WF-CUS3-115-01-SN

ADA Name Plate Sconce

Finish: Satin Nickel

Shade Material: White Butcher Linen

Length: 30" Width: 5 3/4" Depth: 4"

Backplate: 30" x 5 3/4"

Shade: (4 1/2" x 3 1/2") x (4 1/2" x 3 1/2") x 8"

Engraved Plate: 5" L x 4" H

I - Candelabra Based

B. WF-6533X-115-01-ORB

ADA Name Plate Sconce

Finish: Oil Rubbed Bronze

Shade Material: White Butcher Linen

Length: 22" Width: 6" Depth: 4"

Backplate: 22" x 6"

Shade: (4 1/2" x 3 1/2") x (4 1/2" x 3 1/2") x 8"

Engraved Plate: 5" L x 4" H

I - Candelabra Based I - Candelabra Based



A. WF-6215-X-SN
 Sconce
 Finish: Satin Nickel
 Shade Material: White Butcher Linen Softback
 Length: 13" Width: 5 1/2" Depth: 6"
 Backplate: 7" x 5 1/2"
 Shade: 4" x 4" x 10"
 1 - Candelabra Based or GU-24 Socket



B. WF-6591-SN
 ADA Sconce
 Finish: Satin Nickel
 Shade Material: White Butcher Linen Softback
 Length: 13" Width: 8" Depth: 4"
 Backplate: 7" x 5"
 Shade: (8" x 4") x (5" x 2 1/2") x 6"
 1 - Candelabra Based or GU-24 Socket



C.

D.



C. WF-K141-PN
 ADA Sconce
 Finish: Polished Nickel
 Shade Material: White Butcher Linen Softback
 Length: 15" Width: 13" Depth: 4"
 Backplate: 9" x 5"
 Shade: (13" x 4") x (11" x 3 1/2") x 6"
 1 - Candelabra Based or GU-24 Socket

D. WF-CUS4-1115-01-SN
 Double Convenience Outlet Sconce
 Finish: Satin Nickel
 Shade Material: White Butcher Linen Softback
 Length: 13" Width: 10" Depth: 5"
 Backplate: 10" W x 5" H
 Shade: (10" x 5") x (10" x 5") x 8"
 2 - Medium Based or GU-24 Sockets



A. **WF-CUSLCUT-ACR-BZ**

ADA Sconce
 Finish: Bronze
 Shade Material: Frosted Acrylic with Laser Cut Metal
 Length: 11 3/4" Width: 5 3/8" Depth: 4"
 Backplate: 5 3/8" x 5 3/8"
 Diffuser: 10" H x 5 3/8" W
 1 - Candelabra Based



B.

B. **WF-CUSTOM-EMBR**

ADA Embroidered
 Sconce/Acrylic Backing
 Finish: Oil Rubbed Bronze
 Shade Material: White
 Whisper/Chocolate Trim
 Length: 8" Width: 16" Depth: 4"
 Backplate: 15" x 7"
 Shade: (16" x 4") x (16" x 4") x 8"
 2 - Candelabra Based or GU-24 Sockets
 (Any embroidery available)

C.



D.



D **WF-K2058-ACR-SN**

ADA Sconce
 Finish: Satin Nickel
 Shade Material: Textured Cream Acrylic
 Length: 9" Width: 6" Depth: 4"
 Backplate: 6" x 6"
 Diffuser: 8" H x 4 3/4" W
 1 - Candelabra Based optional)

C. **WF-CUS10-174-25-SN**

ADA Sconce
 Finish: Satin Nickel
 Shade Material: Chocolate
 Silk Shantung
 Length: 10"
 Width: 11"
 Depth: 4"
 Backplate: 9.5" x 9.5"
 Shade: (11" x 10") x (11" x 10") x 4"
 2 - Candelabra or GU-24 Sockets
 LED Board optional

A.



B.



C.



A. WF-CUS1-115-01-MBK

ADA Sconce
Finish: Matte Black
Shade Material: White Butcher Linen
Length: 24" Width: 16"
Depth: 4"
Backplate: 13 1/2" x 7 1/2"
Shade: (16" x 4") x (16" x 4") x 9" H
2 - Medium Based or
GU-24 Sockets

B. WF-CUS2-115-01-ORB

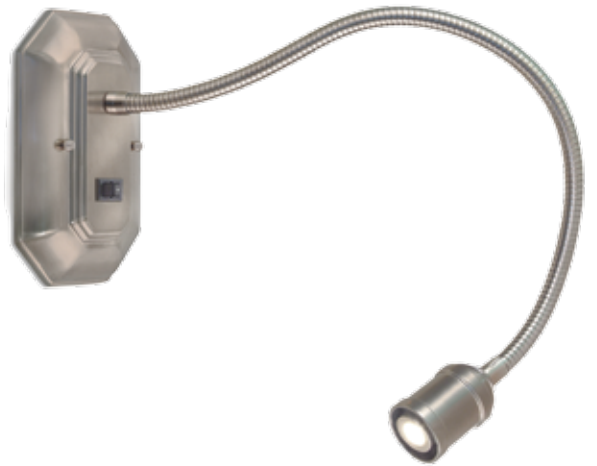
ADA Sconce
Finish: Oil Rubbed Bronze
Shade Material: White Butcher Linen
Length: 18 1/2" Width: 18"
Depth: 4" Backplate: 15" x 7"
Shade: (18" x 4") x (18" x 4") x 8 1/2" H
2 - Medium Based or GU-24 Sockets

C. WF-CUS8-115-01-ORB

ADA "O" Sconce
Finish: Oil Rubbed Bronze
Shade Material: White Butcher Linen
Length: 16 1/2" Width: 18" Depth: 4"
Backplate: 15" x 7"
Shade: (18" x 4") x (18" x 4") x 8 1/2" H
2 - Medium Based or GU-24 Sockets



A. WF-6215-LED-SN
 LED Reading Light with Flexible Shaft
 Finish: Satin Nickel
 Length: 6 3/4" Width: 5 1/2"
 Depth: 28"
 Fully Extended
 Backplate: 6 3/4" x 5 1/2"
 1 - 3Watt LED Bulb 2700 K Warm White



C.



B.

B. WF-A099-LED-SN
 LED Reading Light with Flexible Shaft
 Finish: Satin Nickel
 Length: 5 1/2" Width: 5 1/2"
 Depth: 28"
 Fully Extended
 Backplate: 5 1/2" dia.
 1 - 3Watt LED Bulb 2700 K Warm White



D.

C. WF-6785-LED-SN
 LED Reading Light with Flexible Shaft
 Finish: Satin Nickel
 Length: 8 1/4" Width: 5 1/8"
 Depth: 28"
 Fully Ext. Backplate: 8 1/4" x 5 1/8"
 1 - 3Watt LED Bulb 2700 K Warm White

D. WF-A761-LED-SN
 LED Reading Light with Flexible Shaft
 Finish: Satin Nickel
 Length: 5" Width: 5" Depth: 28"
 Fully Extended
 Backplate: 5" x 5"
 1 - 3Watt LED Bulb 2700 K Warm White

A.



B.



C.



A. WF-CUS06-PN

ADA Sconce
Finish: Polished Nickel
Shade Material: Fluted Steel
Length: 24" Width: 7" Depth: 3"
Backplate: 4" x 4"
Shade: (7" x 3") x (7" x 3") x 24"
2 - Candelabra Based or GU-24 Socket

B. WF-CUS7-115-01-SN

Wall Fixture/Sconce
Finish: Satin Nickel
Shade Material: White Butcher Linen
Length: 40" Width: 10" Depth: 12 1/2"
Backplate: 22" x 6" x 1 1/2" D
Shade: 10" x 10" x 28"
1 - Medium Based or GU-24 Socket

C. WF-CUS05-ACR-SN

Vanity Light Wall Fixture
Finish: Satin Nickel
Shade Material: Opal Acrylic
Length: 4 1/2" Width: 26"
Depth: 5"
Backplate: 26" W x 4 1/2" L
Shade: (25" x 4") x (25" x 4") x 2 1/2"
2 - T5 Linear Fluorescent Bi-Pin Sockets

CUSTOM REPRODUCTION LIGHTING



A.



The National Restaurant
Greenwich, CT

- A. **FM-CUS01-GWH**
Custom Retro Ceiling Light
Finish: Gloss White
Clear Glass Diffuser 3 3/8" Dia
Length: 6"
Width: 4 5/8"
Canopy: 4 5/8"
Socket: 60 Watt Max Medium Based

We have the ability to reproduce most any custom design. In this case, the customer wanted to reproduce 1920's style lighting fixtures for their fine restaurant to achieve a specific design.

INDEX

Item #	Description	Page
FL-6654-A791-OB	Floor Lamp	16
FL-A065-A090-SN	Floor Lamp	14
FL-A065-N3760-GM	Floor Lamp	9
FL-A065-N7685-OB	Floor Lamp	15
FL-A065-ORB	Floor Lamp	10
FL-A065-SN	Floor Lamp	11
FL-A1005-4TUB-BKG	Floor Lamp	8
FL-N8205-N8204-RST	Floor Lamp	12
FM-CUS01-GWH	Custom Ceiling Light	57
SWF-5802-SN	Swing Arm Sconce	45
SWF-6530-N2545-GBLK	Swing Arm Sconce	50
SWF-6531-AC8544-PHB	Swing Arm Sconce	50
SWF-6531-OB	Swing Arm Sconce	50
SWF-6533X-X2-SN	Swing Arm Sconce	45
TL-2117-C521-PHB	Table Lamp	36
TL-5855-A090-SN	Table Lamp	14
TL-6400-6401-OB	Table Lamp	30
TL-6533X-ORB	Table Lamp	17
TL-6628-6630-OB	Table Lamp	30
TL-6637-A652-WH	Table Lamp	13
TL-6637-A977-LB	Table Lamp	35
TL-6637-ORB	Table Lamp	19
TL-6637X-A846-BGBZ	Table Lamp	13
TL-6637X-N7833-SU	Table Lamp	24
TL-6637X-N8204-RST	Table Lamp	12
TL-6667-4TUB-BKG	Table Lamp	8
TL-6667-A620-SN	Table Lamp	22
TL-6673-6674-SN	Table Lamp	23
TL-6678-6526-ES	Table Lamp	31
TL-6678-6780-YL	Table Lamp	32
TL-6678-A057-SN	Table Lamp	22
TL-6678-A2061-SN	Table Lamp	27
TL-6678-A578-APW	Table Lamp	27
TL-6678-A791-OB	Table Lamp	15
TL-6678-A791-OB	Table Lamp	16
TL-6678-AUR-SN	Table Lamp	37
TL-6678-K5038-SN	Table Lamp	26
TL-6678-N7608-LB	Table Lamp	34
TL-A2073-ORB	Table Lamp	20
TL-A752-SN	Table Lamp	21
TL-A755-A715-PHB	Table Lamp	33
TL-A991-A092-SN	Table Lamp	23
TL-AC1584-6793-PHB	Table Lamp	33
TL-CUS13X6B-AB	Table Lamp	37
TL-K100-6621C-OB	Table Lamp	29
TL-K100-6670-SN	Table Lamp	28
TL-K100-6677-OB	Table Lamp	29
TL-K100-K537-OB	Table Lamp	29
TL-K100-K538-SN	Table Lamp	28
TL-K100-SN	Table Lamp	20
TL-K4053-A630-SN	Table Lamp	26
TL-K54-K543-OB	Table Lamp	31
TL-K55-A916-OB	Table Lamp	31
TL-K57-A050-LB	Table Lamp	35
TL-K6001-K2091A-SN	Table Lamp	25
TL-K6139-A2248-AV	Table Lamp	32
TL-K6167-A963-007-S	Table Lamp	36
TL-K6184-ORB	Table Lamp	10
TL-K6184-SN	Table Lamp	11
TL-K771-SN	Table Lamp	21
TL-N3758-N3759-GM	Table Lamp	9
TL-N6332-N6333-SN	Table Lamp	25
TL-N8161-30H-ORB	Bolt Down Lamp	18
TL-N8161-42H-ORB	Bolt Down Lamp	18
TL-N8161-ORB	Table Lamp	19
TL-N8217-RST	Table Lamp	24
WF-2444-2816X2-BGBZ	Wall Fixture	49
WF-5019X-GL	Wall Fixture	40
WF-5802-6774-SN	Wall Fixture	44

Item #	Description	Page
WF-5802-K138-PHB	Wall Fixture	46
WF-6215-LED-SN	Wall Fixture	55
WF-6215-X-SN	Wall Fixture	52
WF-6372-X2-SN	Wall Fixture	42
WF-6413-6701-PW	Wall Fixture	46
WF-6432-5045-SN	Wall Fixture	42
WF-6533X-115-01-ORB	Wall Fixture	51
WF-6533X-6774X2-SN	Wall Fixture	44
WF-6591-SN	Wall Fixture	52
WF-6592-X2-BB	Wall Fixture	41
WF-6773-6774-PN	Wall Fixture	44
WF-6773-6798-SN	Wall Fixture	44
WF-6785-LED-SN	Wall Fixture	55
WF-6785-X2-OB	Wall Fixture	39
WF-6790-115-01-244X-SN	Wall Fixture	39
WF-6791-115-05-578-ORB	Wall Fixture	43
WF-6791-6799-OB	Wall Fixture	41
WF-6791-X1-OB	Wall Fixture	39
WF-6792-1355-SN	Wall Fixture	41
WF-6792-A964-2-SN	Wall Fixture	42
WF-A013-K7092-OB	Wall Fixture	46
WF-A099-LED-SN	Wall Fixture	55
WF-A761-LED-SN	Wall Fixture	55
WF-A891-OB	Wall Fixture	40
WF-A979-K3307X2-OB	Wall Fixture	47
WF-A979-K3307X2-OB	Wall Fixture	47
WF-AC2241-K5024-BB	Wall Fixture	47
WF-AC8561-K1504-BB	Wall Fixture	47
WF-C193-K1510-MS	Wall Fixture	48
WF-C577-C106-DW	Wall Fixture	48
WF-C577-C106X2-DW	Wall Fixture	48
WF-CUS05-ACR-SN	Wall Fixture	56
WF-CUS06-PN	Wall Fixture	56
WF-CUS1-115-01-MBK	Wall Fixture	54
WF-CUS10-174-25-SN	Wall Fixture	53
WF-CUS2-115-01-ORB	Wall Fixture	54
WF-CUS3-115-01-SN	Wall Fixture	51
WF-CUS4-115-01-SN	Wall Fixture	52
WF-CUS7-115-01-SN	Wall Fixture	56
WF-CUS8-115-01-ORB	Wall Fixture	54
WF-CUS9-115-01-ORB	Wall Fixture	43
WF-CUSLCUT-ACR-BZ	Wall Fixture	53
WF-CUSTOM-EMBR	Wall Fixture	53
WF-K141-PN	Wall Fixture	52
WF-K2058-ACR-SN	Wall Fixture	53
WF-K323-GL	Wall Fixture	40
WF-K7146-GL	Wall Fixture	40
WF-K7164-K5053-BGBZ	Wall Fixture	49
WF-N4708-A1006-OB	Wall Fixture	43
WF-N5628-5046-SN	Wall Fixture	42
WF-N5628-A005-BGBZ	Wall Fixture	47
WF-N5628-K692-SN	Wall Fixture	42
WF-N5628-SB	Wall Fixture	43

FINISH CODES

AB = Antique Brass
APW = Aged Pewter
AV = Avacado
BB = Burnished Brass
BGBZ = Belgian Bronze
BKG = Black With Polished Gold
BZ = Bronze
DW = Distressed White
ES = Espresso
GBLK = Gold with Black Antique
GL = Gold Leaf
GM = Gun Metal
GWH = Gloss White
LB = Light Blue
MBK = Matte Black
MS = Milano Silver
OB = Oxidized Bronze
ORB = Oil Rubbed Bronze
PHB = Polished Honey Brass
PN = Polished Nickel
PW = Pewter
RST = Rust
SB = Satin Brass
SN = Satin Nickel
SU = Smoked Umber
WH = Flat White
YL = Yellow
007S = 007 Silver

Other finishes including custom, are available upon request.



THE STIFFEL LAMP COMPANY HISTORY

The Stiffel Lamp Company was founded in 1932, in Chicago, Illinois by Ted Stiffel. A talented craftsman, Ted Stiffel had a background in fine arts that gave him a unique ability to design innovative and intelligently crafted lamps, which were also beautiful to behold.

Stiffel's dedication to excellence established the company as the industry leader in quality.

During World War II, the company opened up a screw machine department and produced hundreds of thousands of bolts for anti-aircraft guns and other essential components for the war effort. In 1945, after V-J Day, when most government contracts were withdrawn, Stiffel went back to what it did best, making the highest quality metal lamps.

Over the years Stiffel Lamp has contributed a myriad of accomplishments to the lamp industry, including the invention of the patented Stiffel Switch, the pole lamp and unparalleled accomplishments in design.

Today that tradition continues with caring and enthusiastic employees, all of whom work towards one common and rare goal – excellence.

Proudly all of our products are still made in America, at our 40,000 square foot facility in Linden, NJ.

If you take pride in possessing the unusual as well as the finest, then Stiffel should be your choice in lamps. Precise craftsmanship and magnificent design combine to make Stiffel Lamps the world's finest.





Stiffel[®]
HOSPITALITY



(P) 908-925-7500 • (F) 908-925-9240

www.stiffel.com

1233 W. St. Georges Avenue, Linden, NJ 07036